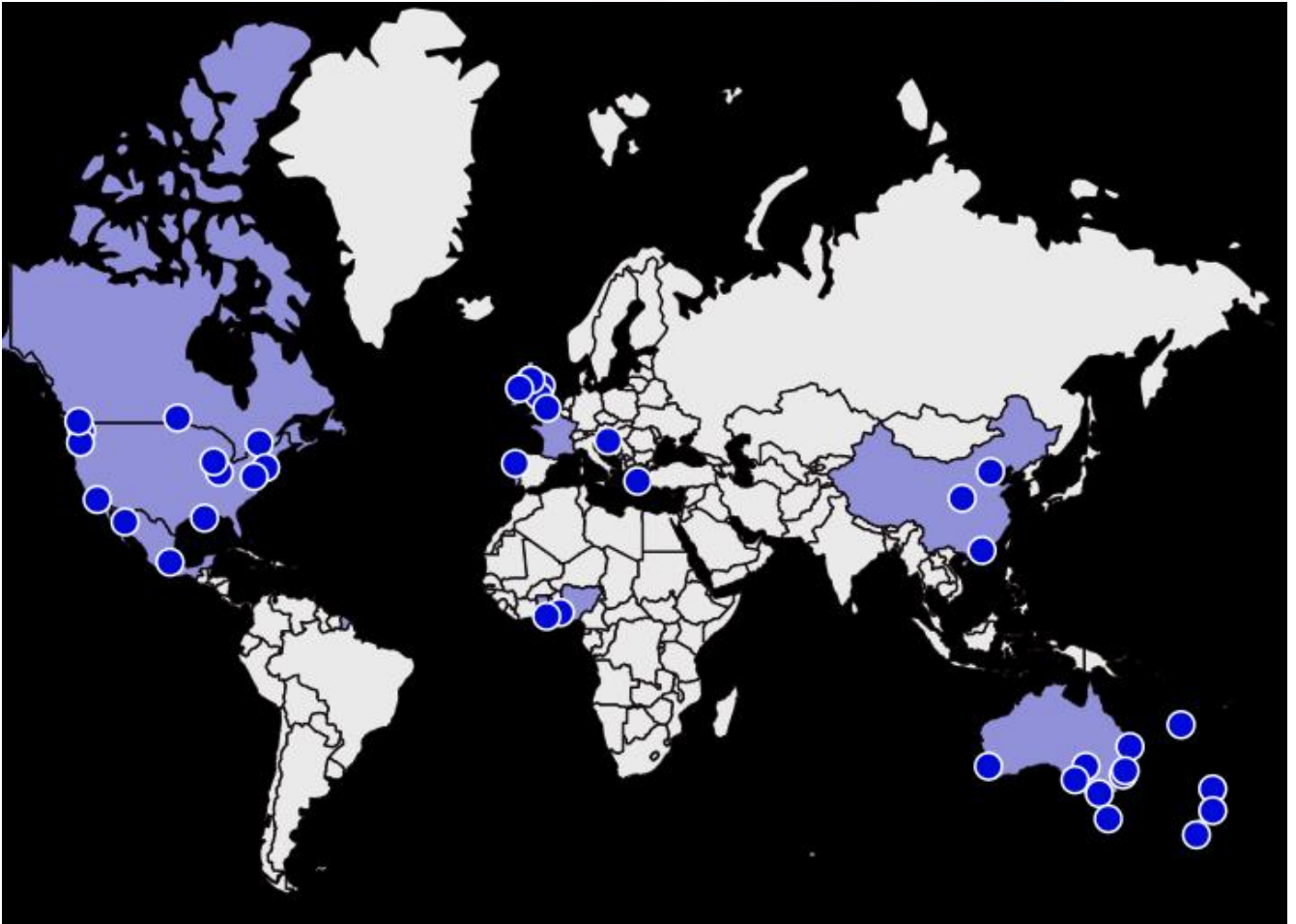




MapMyEnvironment Soil and Dust Lead Maps

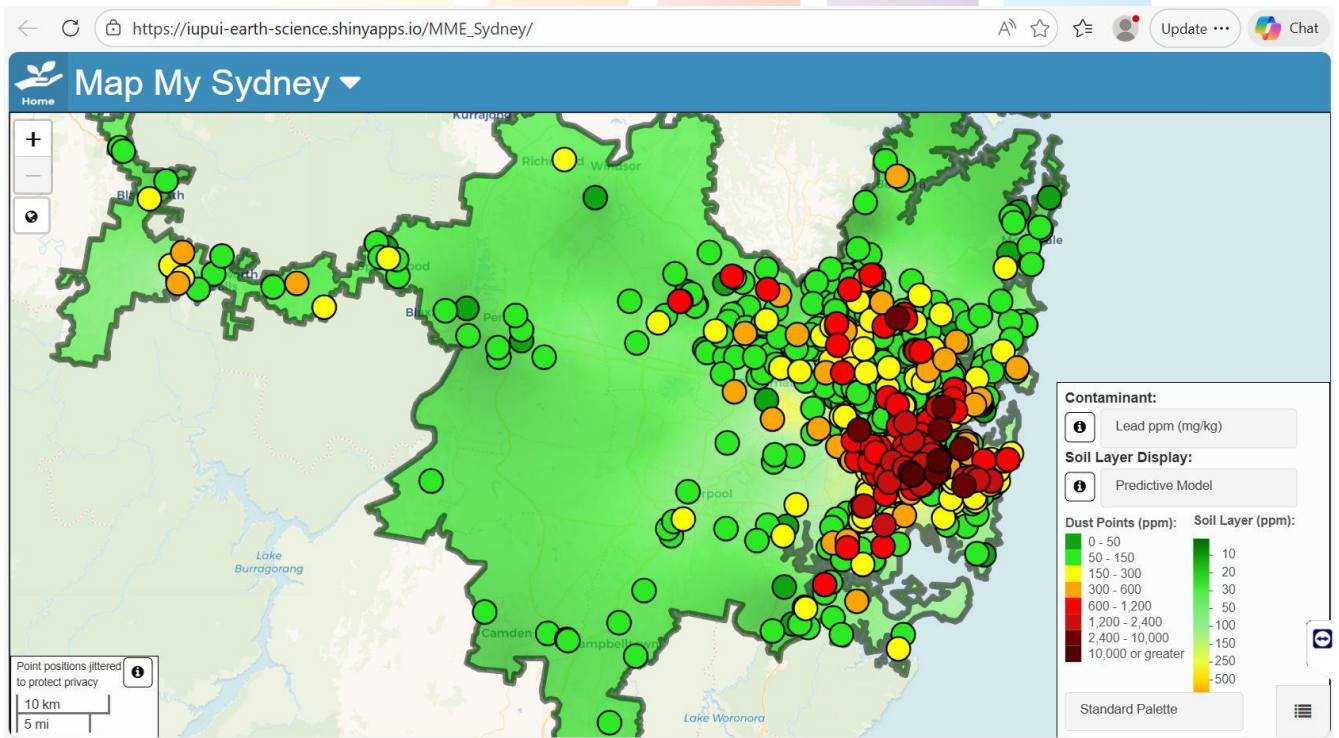
Article and images extracted and collated by Elizabeth O'Brien, The LEAD Group Inc charity with assistance from Melissa Pantz, LEAD Group Kit Purchaser

As at April 21, 2026, there is soil and vacuum dust data from 39 cities in 15 countries mapped on <https://www.mapmyenvironment.com/>



“You can view urban environmental data from these cities within our global map, or one of our Spotlight Cities”: Indianapolis, USA; Sydney and Melbourne, Australia; Newcastle UK; Canada Dust Study. For example, click on **view global map** to go to https://iupui-earth-science.shinyapps.io/MME_Global/ and zoom in on Sydney or go direct to [Map My Sydney - https://iupui-earth-science.shinyapps.io/MME_Sydney/](https://iupui-earth-science.shinyapps.io/MME_Sydney/) to see the Map My Sydney Soil Lead Map as below; or zoom in on the global map to see the Melbourne area of Victoria Soil Lead Map and Vacuum Dust Lead Map as shown further down below.

LEAD Group Kit purchaser Melissa commented: “I’m looking forward to seeing what information my Kit comes back with. The interactive map is unnerving, because it shows high levels of lead contamination near our house. However, it also shows that there are high levels across many inner-city suburbs, and the only way to avoid this might be living further out.”



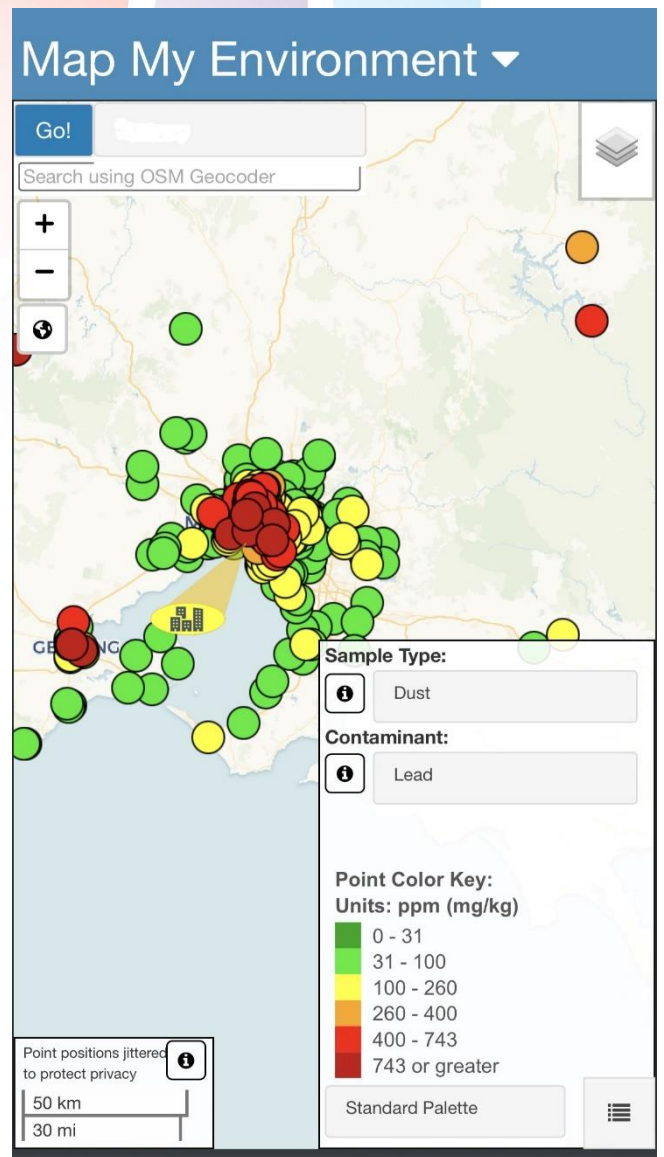
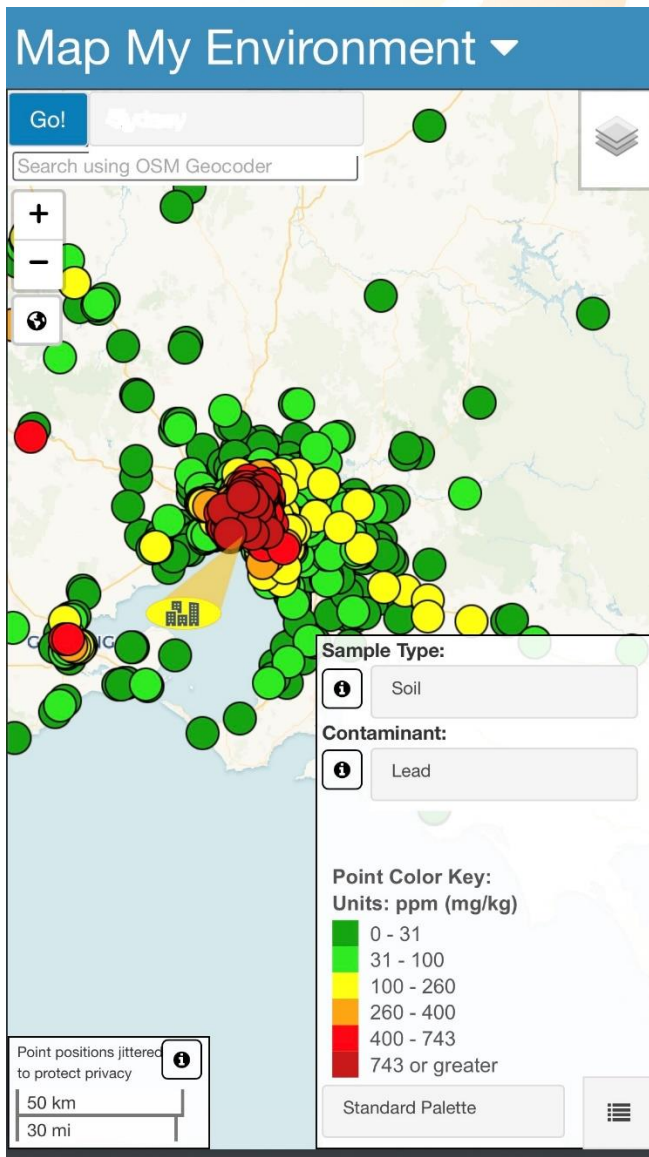
Various webpages at [Map My Environment](https://www.mapmyenvironment.com.au) have maps and info on submitting soil or vacuum dust samples from Australia, New Zealand, Portugal, Greece, United Kingdom (and other parts of Europe), United States and Africa for free testing via XRF (x-ray fluorescence).

According to Professor Mark Taylor – a major player in putting the Map My Environment website together, and a Member of The LEAD Group’s Technical Advisory Board – the XRF (x-ray fluorescence) testing used by the Map My Environment teams captures around 80% of the lead found in the more accurate laboratory analysis used for instance, in a LEAD Group Kit. Note that the ppm or parts per million units used in Map My Environment, are exactly equivalent to the mg/kg or milligrams per kilogram units used for soil lead and vacuum dust lead in a [LEAD Group Kit](https://leadsafeworld.com/shop) from <https://leadsafeworld.com/shop>. Eg 300 ppm = 300 mg/kg lead in soil, but in addition to receiving accurate laboratory analysis results on the following range of sample types at your place, you also receive Interpretation and Comments on your LEAD Group Kit results, including recommendations on actions to take in priority order to make your home and yard lead-safe.

Paint	Soil	Egg
COMMERCIAL Chicken Feed	Ceiling Dust	Vacuum Dust
Toy Paint	Ceramic	Water
Surface Dust WIPE	Asbestos	EXTRA Metals
Fluoride	Food	Medication

Water samples and surface dust wipe samples can only be collected with a Posted LEAD Group Kit but all other sample types can be collected with either a Posted or an Emailed LEAD Group Kit. See <https://leadsafeworld.com/outside-australia/> if you’re not in Australia but are considering buying a LEAD Group

Kit.



The three other Principal Investigators of Map My Environment team alongside Mark Patrick Taylor of Macquarie University, Sydney, Australia, are:

Gabe Filippelli, Professor of Earth Sciences at Indiana University Indianapolis (IUI), USA

Jane Entwistle, Professor of Applied Geochemistry and Health at Northumbria University, UK

and Kin Fai Ho, Associate Professor of Public Health at The Chinese University of Hong Kong.

With adequate funding and technical support, de-identified LEAD Group Kit results could one day be mapped and online too. That would be a dream come true for this writer, Grandma Lead.