

GLASS provides information & referrals on lead poisoning & lead contamination prevention & management, with the goal of eliminating lead poisoning globally & protecting the environment from lead.  
GLASS is run by The LEAD Group Incorporated ABN 25 819 463 114



## GLOBAL LEAD ADVICE AND SUPPORT SERVICE

### Activity Report

#### Reporting up to the end of 2006

#### Table of Contents

1. Achievements & Highlights.....	2
2. GLASS: Technical Expertise.....	3
<i>GLASS Technical Advisory Board (TAB) and area of lead-related expertise.....</i>	<i>3</i>
<i>Committee.....</i>	<i>3</i>
<i>Public Officer.....</i>	<i>3</i>
3. Charted Outputs of GLASS.....	4
Charts Overview.....	4
<i>Figure 1: Calls Handled by GLASS.....</i>	<i>4</i>
<i>Figure 2: Calls by Subject Per Year.....</i>	<i>5</i>
<i>Figure 3: Calls by Category of Caller by Year.....</i>	<i>6</i>
<i>Figure 4: Australia and Overseas Calls by Year.....</i>	<i>7</i>
<i>Figure 5: Library Items Sent.....</i>	<i>87</i>
<i>Report prepared by:.....</i>	<i>98</i>

## 1. Achievements & Highlights

*All achievements and highlights are given as of the end of 2006.*

- 576,334 page views on our website [www.lead.org.au](http://www.lead.org.au) from Nov '02 to Jun '06\* and 53,748 page views from Jul '06 to Dec '06 totalling 630,082 page views from 182 countries since 2002.
- 51,854 calls handled, from both phone and email, from 22,553 clients in 88 different countries around the world.
- Since 1992 we have compiled a database of 4,832 experts + in lead related fields from 27 countries
- A Call Referral is when we refer a client to one or another of these experts in a call (phone, email etc). Since October 1997, GLASS staff have made 23,617 Call Referrals.
- GLASS volunteers constantly add information products to the GLASS library database, as of the end of 2006 it included a total of 8,925 items and no-one has yet refuted the claim that this is the largest publicly accessible lead library on the planet. A total of 481,671 copies of information products have been distributed since 1998, comprising 394,491 copies of library articles and 87,155 individually written responses in answer to queries and requests for multiple copies of information products and individually written responses to queries.

\* The monthly page view counter obtained from the Free Public Domain allowed only 20,000 page views and then stopped counting. This limit was regularly exceeded from March 2005. In June 2006 we switched to a new counter that counts above 20,000.

+ An expert is a professional or organisation who works with lead or deals with lead problems in their profession or hobby, and who can offer useful information or services pertaining to lead management, or who is responsible for lead policy or education programs. Lead poisoned adults or the parents of lead poisoned children can be considered an expert if they are willing to share their experiences with others in similar situations.

## 2. GLASS: Technical Expertise

Outlined below is the Technical Advisory Board (TAB), the Committee and the Public Officer.

### GLASS Technical Advisory Board (TAB) and area of lead-related expertise

1.	Professor Brian Gulson	isotopic fingerprinting, lead toxicokinetics
2.	Professor Chris Winder	toxicology, occupational health and safety
3.	Professor Peter Newman	science and technology policy, urban planning
4.	Professor Graham Vimpani	child and family health
5.	Professor Geoffrey Duggin	clinical toxicologist
6.	Professor Michael Mira	public health, general practice
7.	Dr Garth Alperstein	community paediatrics
8.	Dr Ian Irvine	environmental contamination especially of water
9.	Dr Chloë Mason	public health, environmental protection, public interest
10.	Dr Mariann Lloyd-Smith	international toxics campaigning, National Toxics Network
11.	Dr Val Brown	environment, consumers
12.	Dr Jill Maddison	veterinary research
13.	Dr Karl Kruszelnicki	medical and scientific commentator
14.	Dr John Wlodarczyk	statistician
15.	Dr Kate Hughes	political science, toxics campaigning, Olympics
16.	Dr Marc Grunseit	professional and hobby (leadlighting) safety
17.	Dr Ben Balzer	general practice
18.	Graeme Waller	pathology, environmental assessment
19.	Fred Salome	industrial chemistry, paint
20.	Jack Haley	automotive engineering, environmental impacts of vehicles
21.	Michelle Calvert	local government, lead advice and referral
22.	Michael Mobbs	environmental law
23.	Elizabeth O'Brien	community advocacy, international campaigning
24.	Theresa Gordon	point source community advocacy, international campaigning
25.	Robin Mosman	conflict resolution, writing
26.	Rosemary Ayoub	early childhood education
27.	Mike van Alphen	public health and environmental investigation
28.	Carol Bodle	residential lead assessment and occupational hygiene
29.	Darryl Gerrity	local government policy

### Committee

1.	Elizabeth O'Brien, B Sc, Grad Dip Educational Studies (Health)	President
2.	Michelle Calvert, former GLASS Education Officer	Deputy President
3.	Alex Jewson, GLASS Administrator	Treasurer
4.	Roger Kilburn, Australian Police Medal (APM)	Secretary
5.	Carol Bodle, B Med Sc (Hon), M App Sc (OH&S), Grad Dip Occupational Hygiene	Committee Member
6.	Madeline Aitken, B Arts in Communications (Social Inquiry)	Committee Member

### Public Officer

Fred Salome, B Sc (Hon. Organic Chemistry)

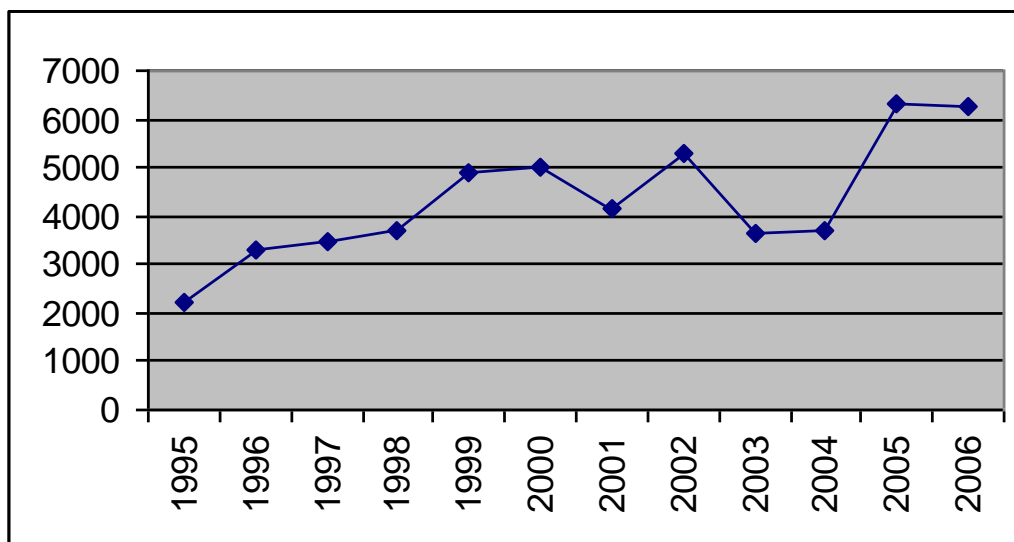
### 3. Charted Outputs of GLASS

#### Charts Overview

The charted Figures 1-5 below are taken from The GLASS MS SQL database. Operational since 1995, the MS SQL database collates one of the world's largest relational databases covering scientific, politico-economic and community issues and events related to lead poisoning and contamination prevention and management. Statistically significant volumes of data relate community responses and awareness of issues surrounding lead poisoning and pollution and their abatement.

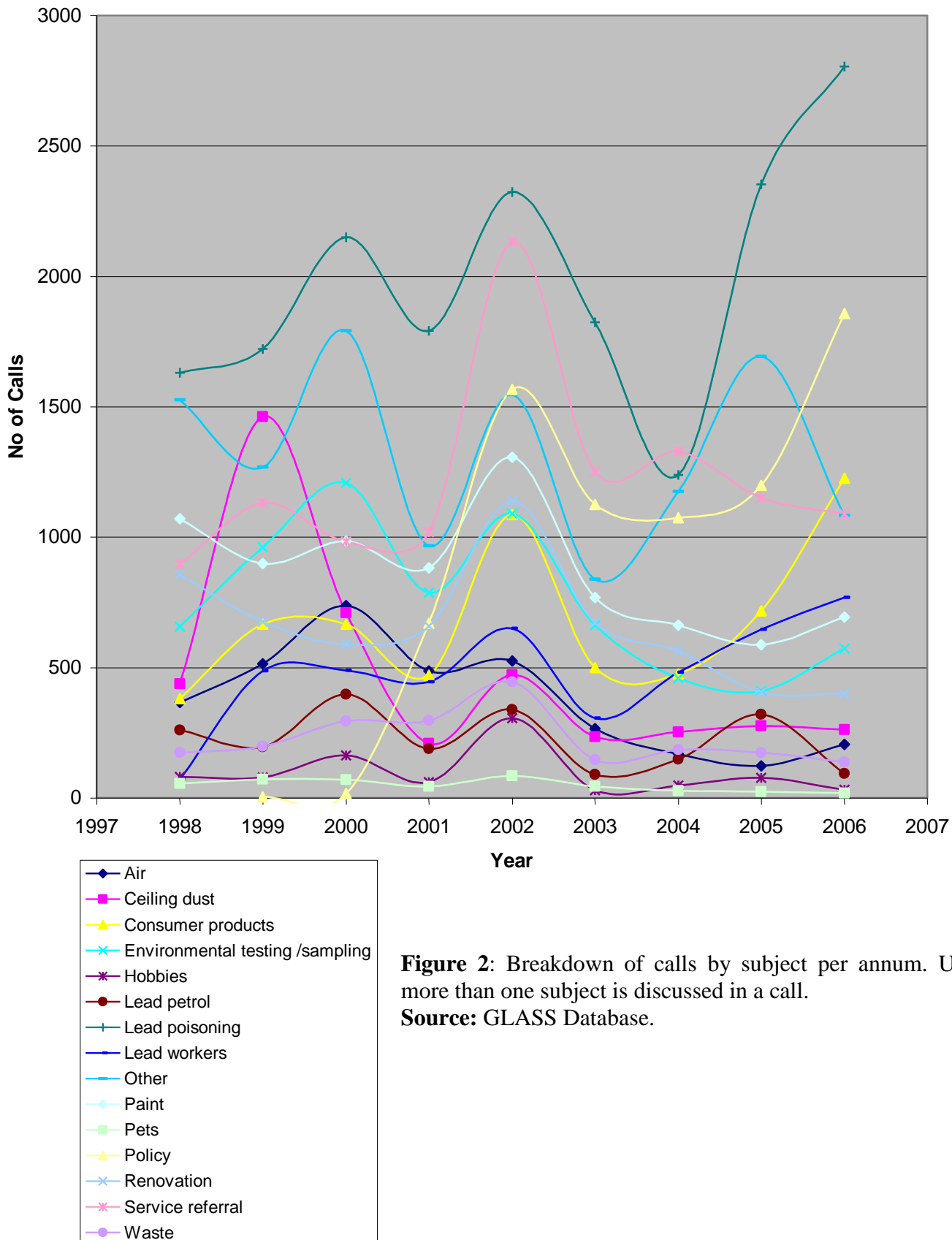
This database is analysed by caller's region of origin, lead issue discussed (call subject) and the nature of work (category) of the enquirer as per figures 2 to 4. In response to calls, GLASS sends information products from the GLASS library database of nearly 9,000 lead-related articles. Using these systems tying together community education and client feedback, the response to funded projects is monitored and easily evaluated for return on investment.

**Figure 1: Calls Handled by GLASS**



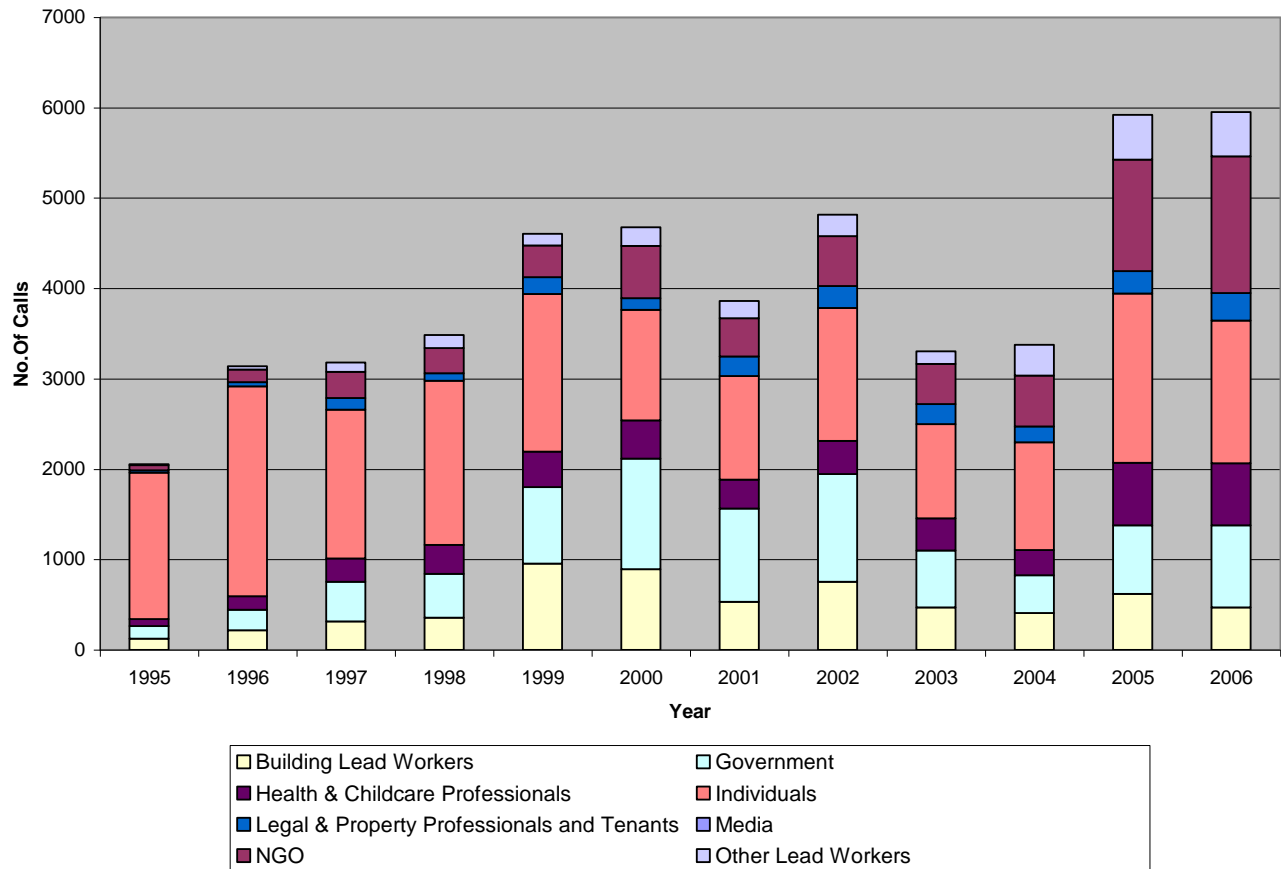
**Figure 1:** Total calls (phone and email) handled all years 2006: over 51,854.  
Source: GLASS Database

**Figure 2: Calls by Subject Per Year.**



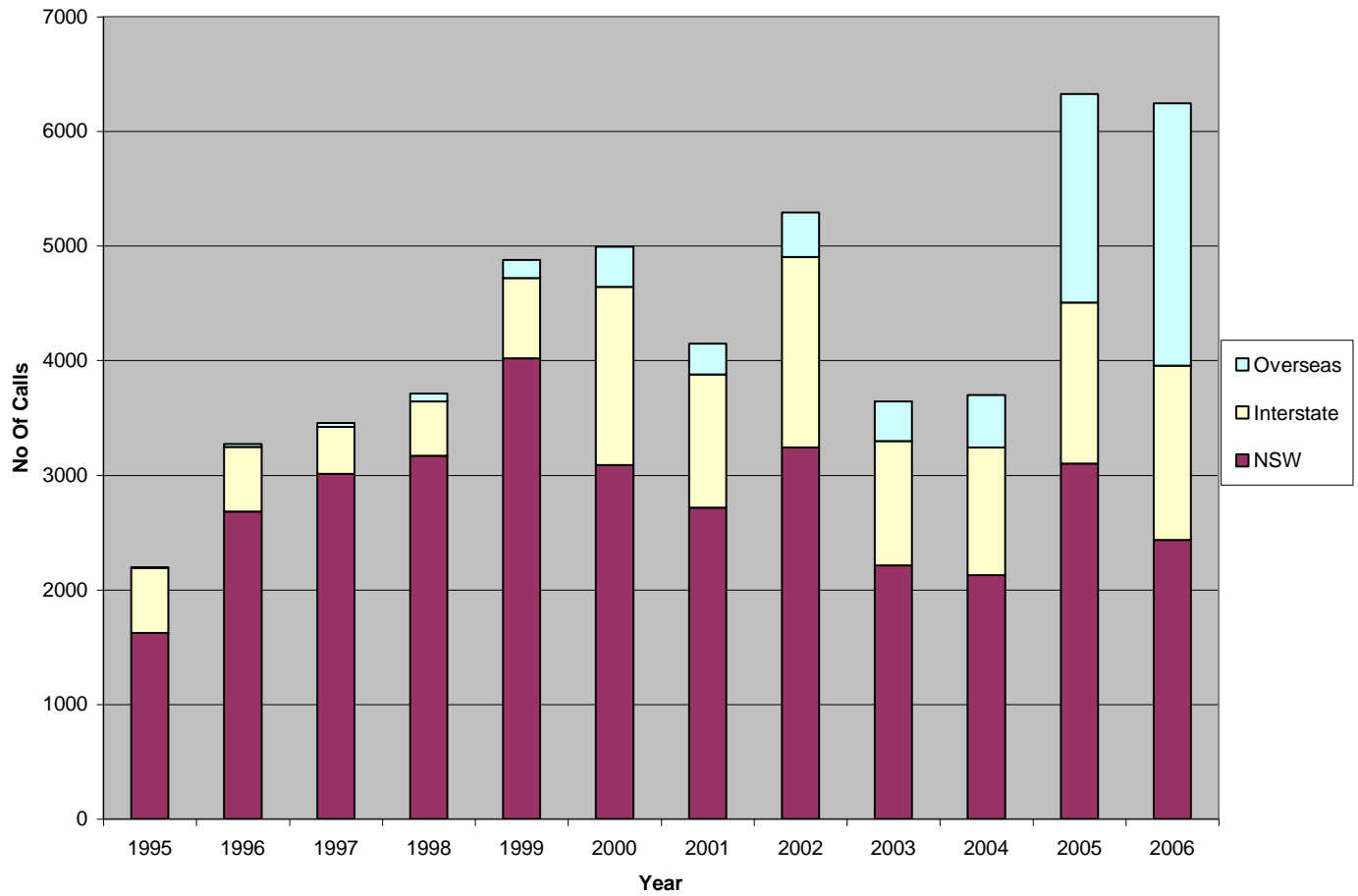
**Figure 2:** Breakdown of calls by subject per annum. Usually, more than one subject is discussed in a call.  
**Source:** GLASS Database.

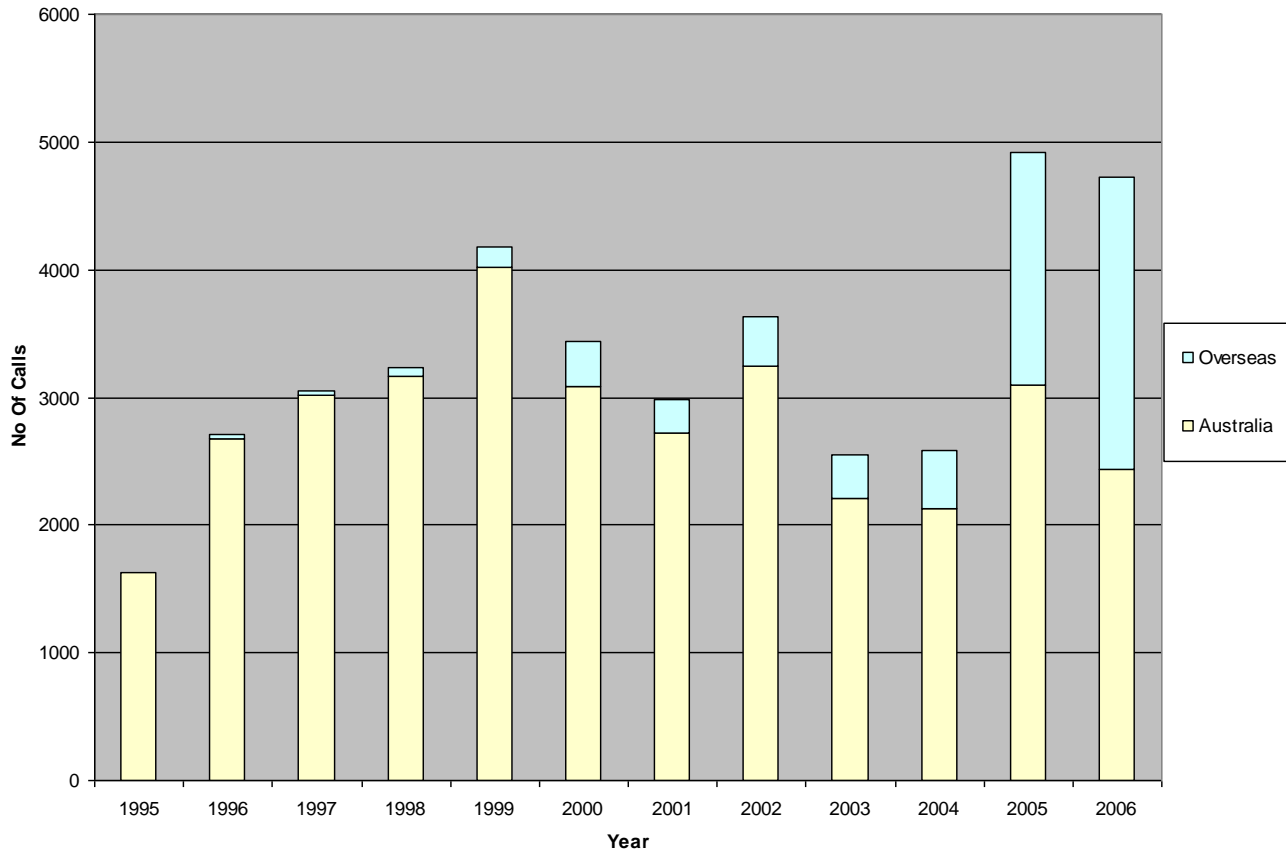
**Figure 3: Calls by Category of Caller by Year**



**Figure 4: Breakdown by category of caller.**  
Source: GLASS Database.

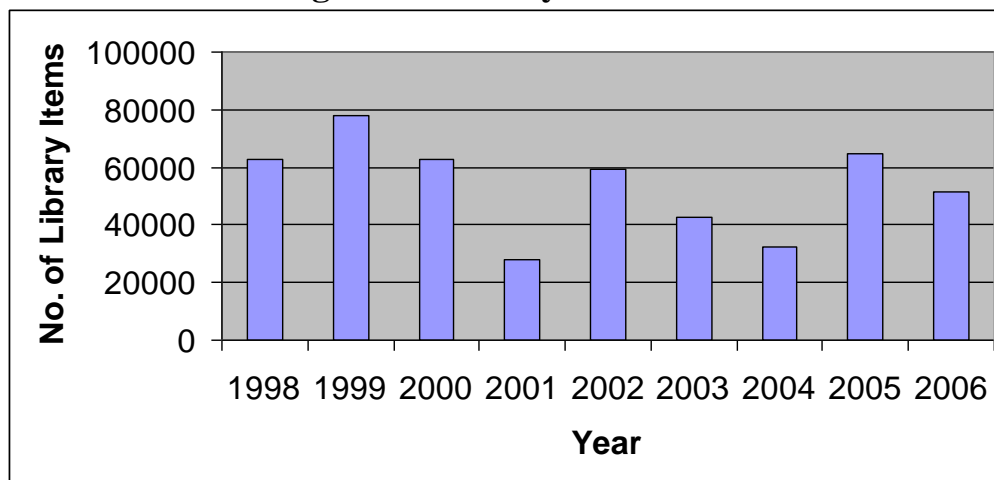
**Figure 4: Australian and Overseas Calls by Year**





**Figure 3:** Breakdown by region of origin of caller.  
Source: GLASS Database

**Figure 5: Library Items Sent**



**Figure 5:** Library items sent since data entry of sent library items was kept, with record of a total of 481,676 sent items recorded to the end of 2006.



***Report prepared by:***

Alex Jewson, Administrator, GLASS

David Ratcliffe, Volunteer Webmaster, GLASS

Report presentation by Wendy Evans, Volunteer Funding and Sponsorship Executive, GLASS

Edited by Elizabeth O'Brien, Manager, GLASS