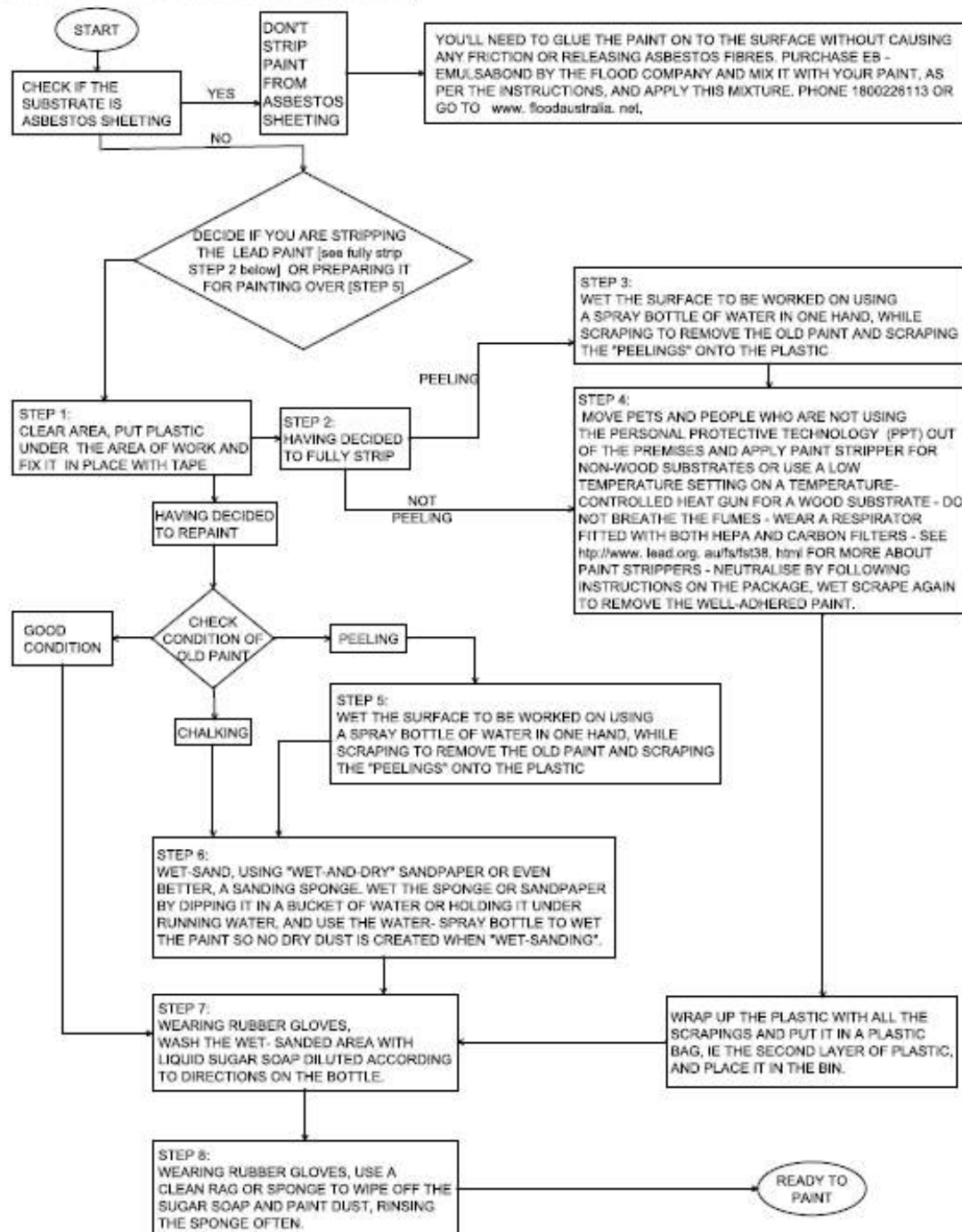




Lead Paint Management Flowchart – call for further feedback

This flowchart was developed by Elizabeth O'Brien, Lead Scientist and Lead Advisor, The LEAD Group Inc (charity), Australia with software/design help from a client. Please see the feedback provided to date by email (overleaf), and provide your feedback on it for the next issue of LEAD Action News

LEAD PAINT MANAGEMENT FLOWCHART





FEEDBACK ON The LEAD Group's *Lead Paint Management Flowchart* RECEIVED TO DATE:

1. In the flowchart, the step in the bottom-right corner ("WRAP UP THE PLASTIC WITH ALL THE SCRAPINGS...") is unintentionally missed if one follows the "having decided to repaint" path when it should in fact follow on from Step 6 (I assume).
 2. The flow chart looks great, easy to follow and the information is thorough. The only feedback I could offer is to perhaps suggest the use of a respirator for additional protection during both the wet sanding and scraping of peeling paint processes, especially if the scope of the job is large. Also, if timber is being worked on, perhaps mentioning that once it has had lead paint applied, it is likely to retain lead in the timber fibres even after paint stripping (from what I understand), so cautioning against regular sanding after stripping may be helpful as some people may not see the necessity for wetsanding after stripping. However, this is merely additional information to what you have already outlined, so it may be beyond the scope of a flowchart. :)
 3. Thanks so much for the information you sent through and at a glance the flow chart is very helpful.
 4. I think the flow chart is easy to follow - nice and clear.
-